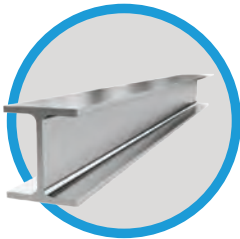




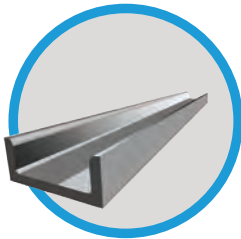
800.893.9681

www.tonnageindustrial.com

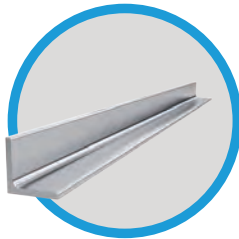
STOCK LIST



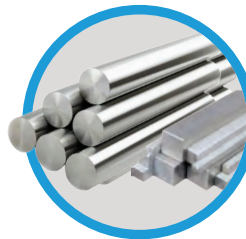
BEAM



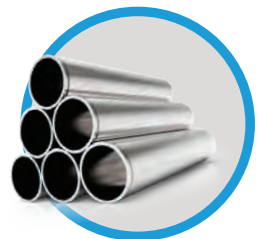
CHANNEL



ANGLE



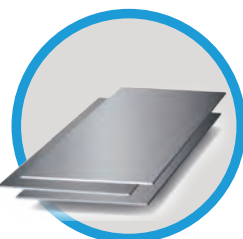
**ROUND
& SQUARE BARS**



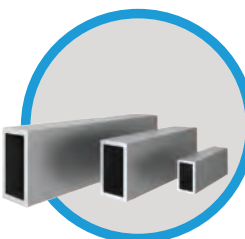
**PIPE &
TUBING**



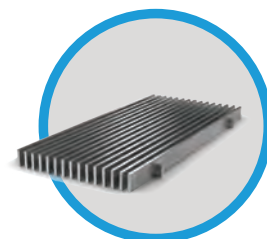
REBAR



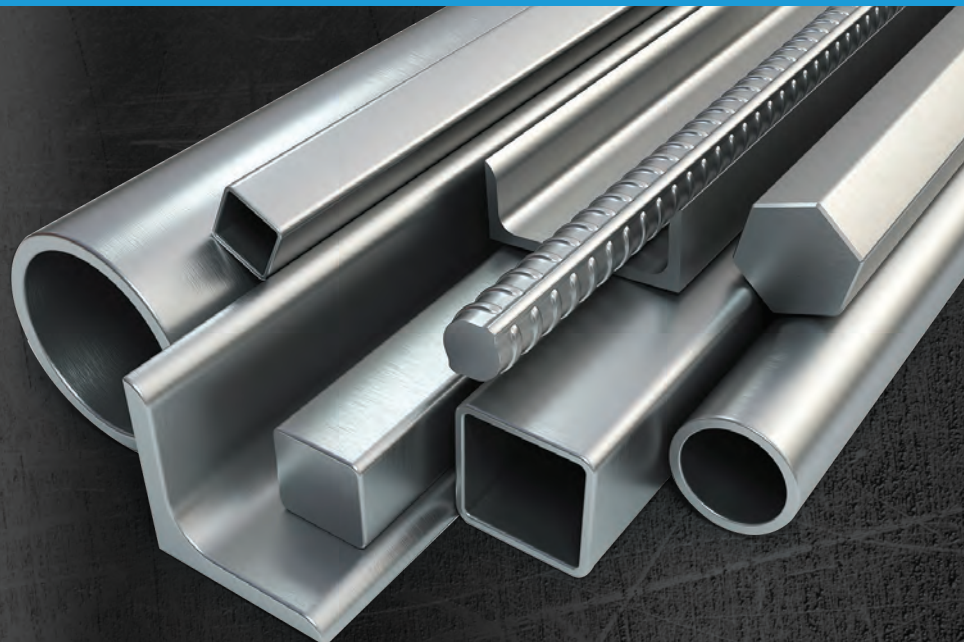
**SHEET &
PLATE**



**SQUARE &
RECTANGULAR TUBING**



GRATING



SPECIALIZING IN:

Steel, Aluminum, Stainless Steel, Brass, Copper, and Alloyed Metals of all types, sizes and shapes

- ANGLE ●
- CHANNEL ●
- FLAT ●
- ROUND ●
- SQ. & RD. TUBE ●
- PIPE ●
- SHEET ●
- PLATE ●
- EXPANDED METAL ●
- GRATING ●
- CORRUGATED SHEETS ●
- RE-BAR ●
- STRUCTURAL BEAMS ●
- PIPE FITTINGS & VALVES ●
- NUTS & BOLTS ●
- INDUSTRIAL SUPPLIES ●
- BANDSAW CUTTING
- SHEARING
- PLASMA & WATER JET CUTTING
- DRILLING & TAPPING
- BENDING, FORMING & ROLLING
- PIPE & BAR THREADING
- MACHINE SHOP SERVICES
- GALVANIZING
- SANDBLASTING & PAINTING
- 24 HOUR EMERGENCY SERVICE

TONS OF INVENTORY AT DISCOUNT PRICES

800.893.9681 | 2130 W. Cowels St., Long Beach, CA 90813
sales@tonnageindustrial.com



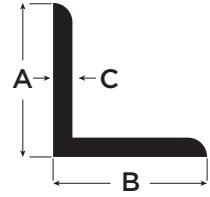
TABLE OF CONTENTS

ANGLES	
BAR SIZES	2
STRUCTURAL	3 - 4
BEAMS	
STANDARD I BEAMS	5
WIDE FLANGE	6 - 9
CHANNELS	
STANDARD & JR. SIZES	10 - 12
CONCRETE REINFORCING BARS	14
EXPANDED METAL	
STANDARD	32
FLATTENED	33
FLAT BARS	15 - 18
FORMULAS	35
GRATING	34
PIPE	23 - 27
PLATE	
FLOOR PLATE	30
SMOOTH PLATE	30 - 31
UNIVERSAL MILL PLATE	18 - 19
ROUND BAR	13
SHEET	29
SQUARE BAR	14
TUBING	
RECTANGULAR	22 - 23
SQUARE	20 - 21
ROUND - TUBES	19 - 20
CREDIT APPLICATION	36



ANGLES

STOCK LENGTHS 20FT.



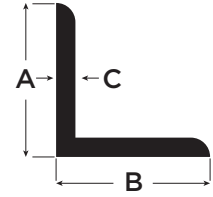
SIZE IN INCHES (A,B,C)	WT. PER FOOT	SIZE IN INCHES (A,B,C)	WT. PER FOOT
$1/2 \times 1/2 \times 1/8$.38	$1\ 3/4 \times 1\ 3/4 \times 1/8$	1.44
		$3/16$	2.12
$5/8 \times 5/8 \times 1/8$.48	$1/4$	2.77
$3/4 \times 3/4 \times 1/8$.59	$2 \times 1\ 1/4 \times 3/16$	1.96
		$1/4$	2.55
$1 \times 1 \times 1/8$.80	$2 \times 1\ 1/2 \times 1/8$	1.44
$3/16$	1.16	$3/16$	2.12
$1/4$	1.49	$1/4$	2.77
$1\ 1/4 \times 1\ 1/4 \times 1/8$	1.01	$2 \times 2 \times 1/8$	1.65
$3/16$	1.48	$3/16$	2.44
$1/4$	1.92	$1/4$	3.19
		$5/16$	3.92
		$3/8$	4.70
$1\ 1/2 \times 1\ 1/2 \times 1/8$	1.23	$2\ 1/4 \times 1\ 1/2 \times 3/16$	2.28
$3/16$	1.80	$1/4$	2.98
$1/4$	2.34		
		$2\ 1/2 \times 1\ 1/2 \times 3/16$	2.44
		$1/4$	3.19
		$5/16$	3.92
		$2\ 1/2 \times 2 \times 3/16$	2.75
		$1/4$	3.62
		$5/16$	4.50
		$3/8$	5.30
		$2\ 1/2 \times 2\ 1/2 \times 3/16$	3.07
		$1/4$	4.10
		$5/16$	5.00
		$3/8$	5.90
		$1/2$	7.70

ALSO AVAILABLE IN ALUMINUM, STAINLESS & BRASS
CALL FOR PRICE & AVAILABILITY



ANGLES

STOCK LENGTHS 20 &
40 FT.



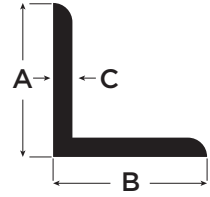
SIZE IN INCHES (A,B,C)	WT. PER FOOT	SIZE IN INCHES (A,B,C)	WT. PER FOOT
3x2x3/16 1/4	.38	1 3/4 x 1 3/4 x 1/8 3/16	1.44 2.12
5/16 3/8 1/2	.48	1/4	2.77
3x2 1/2 x 3/16 1/4	.59	2x1 1/4 x 3/16 1/4	1.96 2.55
5/16 3/8 1/2	.80	2x1 1/2 x 1/8	1.44
3x3x3/16 1/4	1.49	3/16	2.12
5/16 3/8 1/2	1.01 1.48	1/4	2.77
3 1/2 x 2 1/2 x 1/4 5/16	1.92	2x2x1/8	1.65
3/8 1/2	1.23	3/16	2.44
3 1/2 x 3 x 1/4 5/16	1.80	1/4	3.19
3/8 1/2	2.34	5/16	3.92
3 1/2 x 3 1/2 x 1/4 5/16		3/8	4.70
3/8		2 1/4 x 1 1/2 x 3/16	2.28
		1/4	2.98
		2 1/2 x 1 1/2 x 3/16	2.44
		1/4	3.19
		5/16	3.92
		2 1/2 x 2 x 3/16	2.75
		1/4	3.62
		5/16	4.50
		3/8	5.30
		2 1/2 x 2 1/2 x 3/16	3.07
		1/4	4.10
		5/16	5.00
		3/8	5.90
		1/2	7.70

ALSO AVAILABLE IN ALUMINUM, STAINLESS & BRASS
CALL FOR PRICE & AVAILABILITY



ANGLES

STOCK LENGTHS 20 &
40 FT.

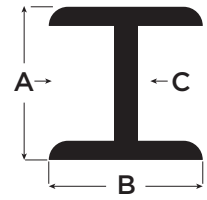
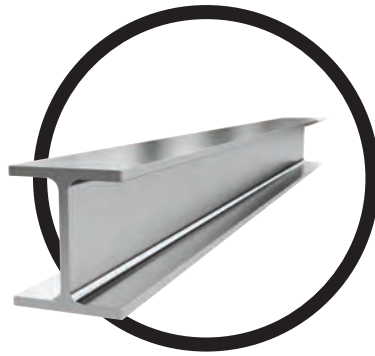


SIZE IN INCHES (A,B,C)	WT. PER FOOT	SIZE IN INCHES (A,B,C)	WT. PER FOOT
6X4X5/16	10.3	8x6x1/2	23.0
3/8	12.3	5/8	28.5
1/2	16.2	3/4	33.8
5/8	20.0	7/8	39.1
3/4	23.6	1	44.2
7/8	27.2	8x8x1/2	26.4
6x6x5/16	12.4	5/8	32.7
3/8	14.9	3/4	38.9
1/2	19.6	7/8	45.0
5/8	24.2	1	51.0
3/4	28.7	1 1/8	56.9
7/8	33.1	9x4x1/2	21.3
1	37.4	5/8	26.3
7x4x3/8	13.6	3/4	31.3
1/2	17.9	7/8	26.1
9/16	20.0	1	40.8
5/8	22.1		
3/4	26.2		
8x4x1/2	19.6		
5/8	24.2		
3/4	28.7		
7/8	33.1		
1	37.4		

ALSO AVAILABLE IN ALUMINUM, STAINLESS & BRASS
CALL FOR PRICE & AVAILABILITY



BEAMS
STANDARD BEAMS - (I)
STOCK IN LENGTHS UP TO 60'



AISI DESIGNATION	A DEPTH IN INCHES	B FLANGE WIDTH INCHES	C WEB THICKNESS INCHES	D WT. PER FOOT
S3 X 5.7	3	2.330	.170	5.7
S3 X 7.5	3	2.509	.349	7.5
S4 X 7.7	4	2.660	.190	7.7
S4 X 9.5	4	2.796	.326	9.5
S5 X 10	5	3.000	.210	10.0
S5 X 14.75	5	3.284	.494	14.75
S6 X 12.5	6	3.330	.230	12.5
S6 X 17.25	6	3.565	.465	17.25
S7 X 15.3	7	3.660	.250	15.3
S7 X 20	7	3.860	.450	20.0
S8 X 18.4	8	4.000	.270	18.4
S8 X 23	8	4.171	.441	23.0
S10 X 25.4	10	4.660	.310	25.4
S10 X 35	10	4.944	.594	35.0
S12 X 31.8	12	5.000	.350	31.8
S12 X 35	12	5.078	.428	25.0
S12 X 40.8	12	5.250	.460	40.8
S12 X 50	12	5.477	.687	50.0
S15 X 42.9	15	5.500	.410	42.9
S12 X 50	15	5.640	.550	50.0
S18 X 54.7	18	6.000	.460	54.7
S18 X 70	18	6.251	.711	70.0
S20 X 65.4	20	6.250	.500	65.4
S20 X 75	20	6.391	.641	75.0
S20 X 85	20	7.053	.653	85.0
S20 X 95	20	7.200	.800	95.0
S24 X 79.9	24	7.000	.500	79.9
S24 X 90	24	7.124	.624	90.0
S24 X 100	24	7.247	.747	100.0
S24 X 105.9	24	7.875	.625	105.9
S24 X 120	24	8.048	.798	120.0

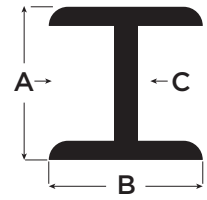
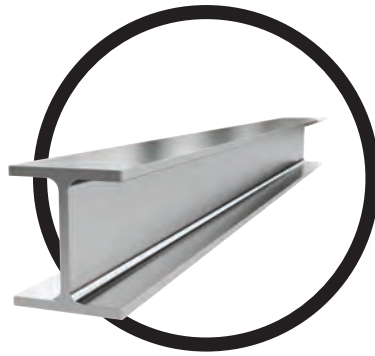
ALSO AVAILABLE IN ALUMINUM, STAINLESS & BRASS
CALL FOR PRICE & AVAILABILITY



BEAMS

WIDE FLANGE

STOCK IN LENGTHS UP TO 60'

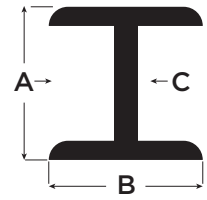


SIZE & WEIGHT PER FOOT	A DEPTH IN INCHES	B FLANGE WIDTH INCHES	C WEB THICKNESS INCHES	D WT. PER FOOT
W4 x 13	4.16	4.060		0.280
W5 x 16	5.01	5.000	0.345	0.240
W5 x 19	5.15	5.030	0.360	0.270
W6 x 9	5.90	3.940	0.430	0.170
W6 x 12	6.03	4.000	0.215	0.230
W6 x 15	5.99	5.990	0.280	0.230
W6 x 16	6.28	4.030	0.260	0.260
W6 x 20	6.20	6.020	0.405	0.260
W6 x 25	6.38	6.080	0.365	0.320
W8 x 10	7.89	3.940	0.455	0.170
W8 x 13	7.99	4.000	0.205	0.230
W8 x 15	8.11	4.015	0.255	0.245
W8 x 18	8.14	5.250	0.315	0.230
W8 x 21	8.28	5.270	0.330	0.250
W8 x 24	7.93	6.495	0.400	0.245
W8 x 28	8.06	6.535	0.400	0.285
W8 x 31	8.00	7.995	0.465	0.285
W8 x 35	8.12	8.020	0.435	0.310
W8 x 40	8.25	8.070	0.495	0.360
W8 x 48	8.50	8.110	0.560	0.400
W8 x 58	8.75	8.220	0.685	0.510
W8 x 67	9.00	8.280	0.810	0.570
W10 x 12	9.87	3.960	0.935	0.190
W10 x 15	9.99	4.000	0.210	0.230
W10 x 17	10.11	4.010	0.270	0.240
W10 x 19	10.24	4.020	0.330	0.250
W10 x 22	10.17	5.750	0.395	0.240
W10 x 26	10.33	5.770	0.360	0.260
W10 x 30	10.47	5.810	0.440	0.300
W10 x 33	9.73	7.960	0.510	0.290
W10 x 39	9.92	7.985	0.435	0.315
W10 x 45	10.10	8.020	0.530	0.350
W10 x 49	9.98	10.000	0.620	0.340
W10 x 54	10.09	10.030	0.560	0.370
W10 x 60	10.22	10.080	0.615	0.420
W10 x 68	10.40	10.130	0.680	0.470
W10 x 77	10.60	10.190	0.770	0.530
W10 x 88	10.84	10.265	0.870	0.605
W10 x 100	11.10	10.340	0.990	0.680
W12 x 14	11.91	3.970	1.120	0.200
W12 x 16	11.99	3.990	0.225	0.220
W12 x 19	12.16	4.005	0.265	0.235
W12 x 22	12.31	4.030	0.350	0.260
W12 x 26	12.22	6.490	0.425	0.230
W12 x 30	12.34	6.520	0.380	0.260
W12 x 35	12.50	6.560	0.440	0.300
			0.520	

BEAMS

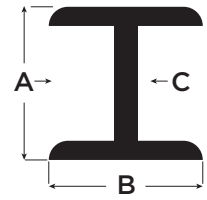
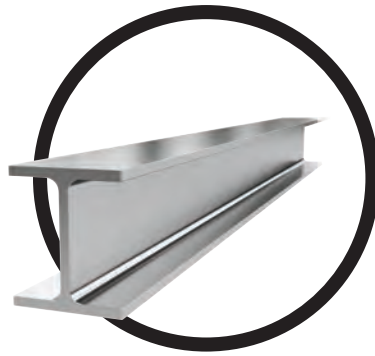
WIDE FLANGE

STOCK IN LENGTHS UP TO 60'



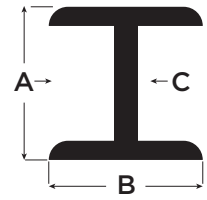
SIZE & WEIGHT PER FOOT	A DEPTH IN INCHES	B FLANGE WIDTH INCHES	C WEB THICKNESS INCHES	D WT. PER FOOT
W12 x 40	11.94	0.515	0.515	0.295
W12 x 45	12.06	0.575	0.575	0.335
W12 x 50	12.19	0.640	0.640	0.370
W12 x 53	12.06	0.575	0.575	0.345
W12 x 58	12.19	0.640	0.640	0.360
W12 x 65	12.12	0.605	0.605	0.390
W12 x 72	12.25	0.670	0.670	0.430
W12 x 79	12.38	0.735	0.735	0.470
W12 x 87	12.53	0.810	0.810	0.525
W12 x 96	12.71	0.900	0.900	0.550
W12 x 106	12.89	0.990	0.990	0.610
W12 x 120	13.12	1.105	1.105	0.710
W12 x 136	13.41	1.250	1.250	0.790
W12 x 152	13.71	1.400	1.400	0.870
W12 x 170	14.03	1.560	1.560	0.960
W12 x 190	14.38	1.735	1.735	1.060
W14 x 22	13.74	0.335	0.335	0.230
W14 x 26	13.91	0.420	0.420	0.255
W14 x 30	13.84	0.385	0.385	0.270
W14 x 34	13.98	0.455	0.455	0.285
W14 x 38	14.10	0.515	0.515	0.310
W14 x 43	13.66	0.530	0.530	0.305
W14 x 48	13.79	0.595	0.595	0.340
W14 x 53	13.92	0.660	0.660	0.370
W14 x 61	13.89	0.645	0.645	0.375
W14 x 68	14.04	0.720	0.720	0.415
W14 x 74	14.17	0.785	0.785	0.450
W14 x 82	14.31	0.885	0.885	0.510
W14 x 90	14.02	0.710	0.710	0.440
W14 x 99	14.16	0.780	0.780	0.485
W14 x 109	14.32	0.860	0.860	0.525
W14 x 120	14.48	0.940	0.940	0.590
W14 x 132	14.66	1.030	1.030	0.645
W16 x 26	15.69	0.345	0.345	0.250
W16 x 31	15.88	0.440	0.440	0.275
W16 x 36	15.86	0.430	0.430	0.295
W16 x 40	16.01	0.505	0.505	0.305
W16 x 45	16.13	0.565	0.565	0.345
W16 x 50	16.26	0.630	0.630	0.380
W16 x 57	16.43	0.715	0.715	0.430
W16 x 67	16.33	0.665	0.665	0.395
W16 x 77	16.52	0.760	0.760	0.455
W16 x 89	16.75	0.875	0.875	0.525
W16 x 100	15.97	0.985	0.985	0.585
W18 x 35	17.70	0.425	0.425	0.300
W18 x 40	17.90	0.525	0.525	0.315

BEAMS
WIDE FLANGE
 STOCK IN LENGTHS UP TO 60'



SIZE & WEIGHT PER FOOT	A DEPTH IN INCHES	B FLANGE WIDTH INCHES	C WEB THICKNESS INCHES	D WT. PER FOOT
W18 x 46	18.06	6.060	0.605	0.360
W18 x 50	17.99	7.495	0.570	0.355
W18 x 55	18.11	7.530	0.630	0.390
W18 x 60	18.24	7.555	0.695	0.415
W18 x 65	18.35	7.590	0.750	0.450
W18 x 71	18.47	7.635	0.810	0.495
W18 x 76	18.21	11.035	0.680	0.425
W18 x 86	18.39	11.090	0.770	0.480
W18 x 97	18.59	11.145	0.870	0.535
W18 x 106	18.73	11.200	0.940	0.590
W18 x 119	18.97	11.265	1.060	0.655
W21 x 44	20.66	6.500	0.450	0.350
W21 x 50	20.83	6.530	0.535	0.380
W21 x 57	21.06	6.555	0.650	0.405
W21 x 62	20.99	8.240	0.615	0.400
W21 x 68	21.13	8.270	0.685	0.430
W21 x 73	21.24	8.295	0.740	0.455
W21 x 83	21.43	8.355	0.835	0.515
W21 x 93	21.62	8.420	0.930	0.580
W21 x 101	21.36	12.290	0.800	0.500
W21 x 111	21.51	12.340	0.875	0.550
W21 x 122	21.68	12.390	0.960	0.600
W21 x 132	21.83	12.440	1.035	0.650
W21 x 147	22.06	12.510	1.150	0.720
W24 x 55	23.57	7.005	0.505	0.395
W24 x 62	23.74	7.040	0.590	0.430
W24 x 68	23.73	8.965	0.585	0.415
W24 x 76	23.92	8.990	0.680	0.440
W24 x 84	24.10	9.020	0.770	0.470
W24 x 94	24.31	9.065	0.875	0.515
W24 x 104	24.06	12.750	0.750	0.500
W24 x 117	24.26	12.800	0.850	0.550
W24 x 131	24.48	12.855	0.960	0.605
W24 x 146	24.74	12.900	1.090	0.650
W24 x 162	25.00	12.955	1.220	0.705
W27 x 84	26.71	9.960	0.640	0.460
W27 x 94	26.92	9.990	0.745	0.490
W27 x 102	27.09	10.015	0.830	0.515
W27 x 114	27.29	10.070	0.930	0.570
W27 x 146	27.38	13.965	0.975	0.605
W27 x 161	27.59	14.020	1.080	0.660
W27 x 178	27.81	14.085	1.190	0.725
W30 x 99	29.65	10.450	0.670	0.520
W30 x 108	29.83	10.475	0.760	0.545
W30 x 116	30.01	10.495	0.850	0.565
W30 x 124	30.17	10.515	0.930	0.585

BEAMS
WIDE FLANGE
 STOCK IN LENGTHS UP TO 60'

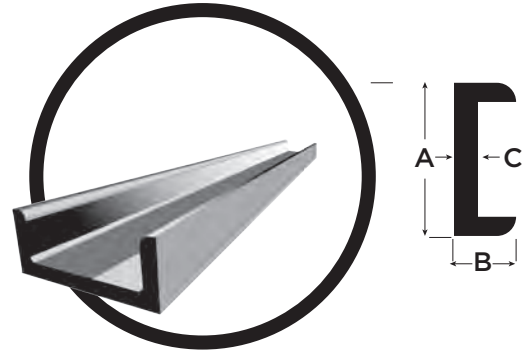


SIZE & WEIGHT PER FOOT	A DEPTH IN INCHES	B FLANGE WIDTH INCHES	C WEB THICKNESS INCHES	D WT. PER FOOT
W30 x 132	30.31	10.545	1.000	0.615
W30 x 173	30.44	14.985	1.065	0.655
W30 x 191	30.68	15.040	1.185	0.710
W30 x 211	30.94	15.105	1.315	0.775
W33 x 118	32.86	11.480	0.740	0.550
W33 x 130	33.09	11.510	0.855	0.580
W33 x 141	33.30	11.535	0.960	0.605
W33 x 152	33.49	11.565	1.055	0.635
W33 x 201	33.68	15.745	1.150	0.715
W33 x 221	33.93	15.805	1.275	0.775
W33 x 241	34.18	15.860	1.400	0.830
W36 x 135	35.55	11.950	0.790	0.600
W36 x 150	35.85	11.975	0.940	0.625
W36 x 160	36.01	12.000	1.020	0.650
W36 x 170	36.17	12.030	1.100	0.680
W36 x 182	36.33	12.075	1.180	0.725
W36 x 194	36.49	12.115	1.260	0.765
W36 x 210	36.69	12.180	1.360	0.830
W36 x 230	35.90	16.470	1.260	0.760
W36 x 245	36.08	16.510	1.350	0.800
W36 x 260	36.26	16.550	1.440	0.840
W36 x 280	36.52	16.595	1.570	0.885
W36 x 300	36.74	16.655	1.680	0.945

STANDARD CHANNELS

CHANNELS - STANDARD STRUCTURAL SIZES

STOCK IN LENGTHS UP TO 60'



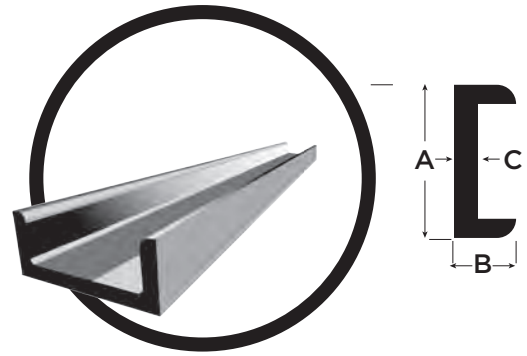
A DEPTH IN INCHES	WT. LBS. PER FT.	B FLANGE WIDTH INCHES	C WEB THICKNESS INCHES
3	4.1	1.410	.170
3	5.0	1.498	.258
3	6.0	1.596	.356
4	5.4	1.580	.180
4	6.25	1.647	.247
4	7.25	1.720	.320
5	6.7	1.750	.190
5	9.0	1.885	.325
6	8.2	1.920	.200
6	10.5	2.034	.314
6	13.0	2.157	.437
7	9.8	2.090	.210
7	12.25	2.194	.314
7	14.75	2.299	.419
8	11.5	2.260	.220
8	13.75	2.343	.303
8	18.75	2.527	.487
9	13.4	2.430	.230
9	15.0	2.485	.285
9	20.0	2.648	.448
10	15.3	2.600	.240
10	20.0	2.739	.379
10	25.0	2.886	.526
10	30.0	3.033	.673
12	20.7	2.940	.280
12	25.0	3.047	.387
12	30.0	3.170	.510
15	33.9	3.400	.400
15	40.0	3.520	.520
15	50.0	3.716	.716

ALSO IN ALUMINUM
CALL FOR PRICE & AVAILABILITY IN STAINLESS



JUNIOR CHANNELS

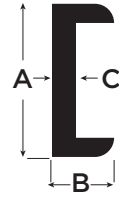
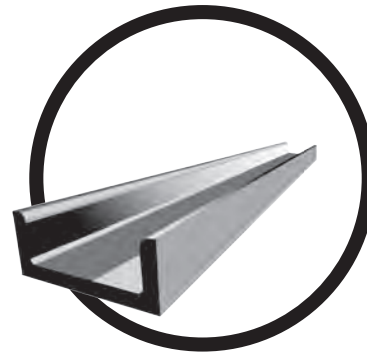
JUNIOR STRUCTURAL SIZES
Stock Lengths up to 50ft.



A DEPTH IN INCHES	WT. LBS. PER FT.	FLANGE WIDTH INCHES	WEB THICKNESS INCHES
3	7.1	1.938	.312
3	9.0	2.122	.497
4	13.8	2.500	.500
6	12.0	2.497	.310
6	15.1	2.941	.316
6	15.3	3.500	.340
6	16.3	3.000	.375
6	18.0	3.504	.379
7	17.6	3.000	.375
7	19.1	3.452	.352
7	22.7	3.603	.503
8	8.5	1.874	.179
8	18.7	2.978	.353
8	20.0	3.025	.400
8	21.4	3.450	.375
8	22.8	3.502	.427
9	23.9	3.450	.400
9	25.4	3.500	.450
10	6.5	1.127	.152
10	8.4	1.500	.170
10	21.9	3.450	.325
10	24.9	3.402	.377
10	25.3	3.550	.425
10	28.3	3.502	.477
10	28.5	3.950	.425
10	33.6	4.100	.575
10	41.1	4.321	.796

JUNIOR CHANNELS CONT.

JUNIOR STRUCTURAL SIZES
Stock Lengths up to 50ft.



A DEPTH IN INCHES	WT. LBS. PER FT.	FLANGE WIDTH INCHES	WEB THICKNESS INCHES
12	10.6	1.500	.190
12	30.9	3.450	.450
12	32.9	3.500	.500
12	35.0	3.767	.467
12	37.0	3.600	.600
12	40.0	3.890	.590
12	45.0	4.012	.712
12	50.0	4.135	.835
13	31.8	4.000	.375
13	35.0	4.072	.447
13	40.0	4.185	.560
13	50.0	4.412	.787
18	42.7	3.950	.450
18	45.8	4.000	.500
18	51.9	4.100	.600
18	58.0	4.200	.700

STOCK LENGTH, 20'

SIZE IN INCHES A B C	WT. LBS. PER FT.	SIZE IN INCHES A B C	WT. LBS. PER FT.
3/4 x 5/16 x 1/8	.50	1 1/2 x 9/16 x 3/16	1.44
3/4 x 3/8 x 1/8	.56	1 1/2 x 3/4 x 1/8	1.17
7/8 x 3/8 x 1/8	.61	1 1/2 x 1/2 x 3/16	2.65
7/8 x 7/16 x 1/8	.69	1 3/4 x 1/2 x 3/16	1.55
1 x 1/2 x 1/8	.84	2 x 1/2 x 1/8	1.34
1 1/8 x 9/16 x 3/16	1.16	2 x 9/16 x 3/16	1.86
1 1/4 x 1/2 x 1/8	1.01	2 x 5/8 x 1/4	2.28
1 1/2 x 1/2 x 1/8	1.12	2 x 1/8	1.78
2 x 1 x 1/8		2 x 1 x 3/16	2.59
2 x 1 x 3/16		2 1/2 x 5/8 x 3/16	2.27

ALSO IN ALUMINUM
CALL FOR PRICE & AVAILABILITY IN STAINLESS



ROUND BARS

HOT OR COLD ROLLED
STOCK LENGTHS 20FT.



SIZE IN INCHES	WT. LBS. PER FT.	SIZE IN INCHES	WT. LBS. PER FT.
3/16	0.094	3	24.03
1/4	0.167	3 1/8	26.08
5/16	0.261	3 1/4	28.21
3/8	0.376	3 3/8	30.42
7/16	0.511	3 1/2	32.71
1/2	0.668	3 5/8	35.09
9/16	0.845	3 3/4	37.55
5/8	1.043	3 7/8	40.10
11/16	1.262	4	42.73
3/4	1.502	4 1/8	45.44
13/16	1.763	4 1/4	48.23
7/8	2.044	4 3/8	51.11
5/16	2.347	4 1/2	54.08
11	2.670	4 5/8	57.12
1 1/8	3.379	4 3/4	60.25
1 1/4	4.172	5	66.76
1 3/8	5.049	5 1/4	73.60
1 1/2	6.008	5 1/2	80.78
1 5/8	7.051	5 3/4	88.29
1 3/4	8.178	6	96.13
2	10.68	6 1/8	100.18
2 1/8	12.06	6 1/4	104.31
2 1/4	13.52	6 1/2	112.82
2 3/8	15.06	6 3/4	121.67
2 1/2	16.69	7	130.85
2 5/8	18.40	7 1/4	140.36
2 3/4	20.19	7 1/2	150.21
2 7/8	22.07	7 3/4	160.39
2 3/16		8	170.90

FORGED ROUNDS THROUGH 24" ARE AVAILABLE - PLEASE INQUIRE.

ALSO IN ALUMINUM,
STAINLESS STEEL AND BRASS



SQUARE BAR

HOT OR COLD ROLLED
STOCK LENGTHS 20FT.



SIZE IN INCHES	WT. LBS. PER FT.	SIZE IN INCHES	WT. LBS. PER FT.
1/4	0.213	1	3.40
5/16	0.332	1 1/8	4.30
3/8	0.478	1 1/4	5.31
7/16	0.651	1 3/8	6.43
1/2	0.850	1 1/2	7.65
9/16	1.08	1 5/8	8.98
5/8	1.33	1 3/4	10.41
11/16	1.61	1 7/8	11.95
3/4	1.91		
13/16	2.25	2	13.60
7/8	2.60	2 1/4	17.21
		2 1/2	21.25
		2 3/4	25.71
		3	30.60

ALSO IN ALUMINUM, STAINLESS STEEL
AND BRASS, CALL FOR PRICE AND AVAILABILITY

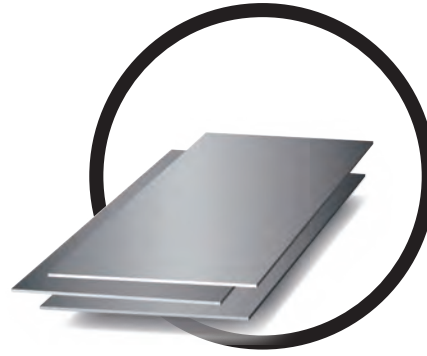
CONCRETE REBARS

STOCK LENGTHS 20FT.



SIZE	WT. LBS.
1/4" #2	.167
3/8" #3	.376
1/2" #4	.668
5/8" #5	1.043
3/4" #6	1.502
7/8" #7	2.044
1" #8	2.670
1 1/8" #9	3.40
1 1/4" #10	4.30
1 3/8" #11	5.31

FLAT BARS
HOT OR COLD ROLLED
STOCK LENGTHS 20FT.



SIZE IN INCHES	WT. LBS. PER FT.	SIZE IN INCHES	WT. LBS. PER FT.
1/8 - INCH		3/16 - INCH	
3/8	.159	3/8	.239
1/2	.213	1/2	.319
5/8	.266	5/8	.398
3/4	.319	3/4	.478
7/8	.372	7/8	.558
1	.425	1	.638
1 1/8	.478	1 1/8	.717
1 1/4	.531	1 1/4	.797
1 1/2	.638	1 1/2	.956
1 3/4	.744	1 3/4	1.116
2	.850	2	1.275
2 1/4	.956	2 1/4	1.434
2 1/2	1.063	2 1/2	1.594
2 3/4	1.169	2 3/4	1.753
3	1.275	3	1.913
3 1/2	1.488	3 1/2	2.231
4	1.700	4	2.550
4 1/2	1.913	4 1/2	2.869
5	2.125	5	3.188
6	2.550	6	3.825
8	3.400	8	5.100
10	4.250	10	6.375
12	5.100	12	7.650

**STEEL, STAINLESS, BRASS
& ALUMINUM REMNANTS AVAILABLE**

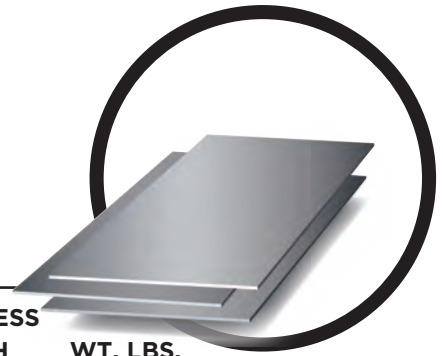
ALSO IN ALUMINUM,
CALL FOR PRICE & AVAILABILITY IN
STAINLESS AND BRASS



FLAT BARS

HOT OR COLD ROLLED

STOCK LENGTHS 20FT.



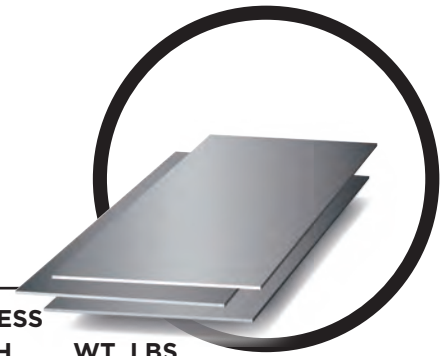
THICKNESS & WIDTH INCHES	WT. LBS. PER FT.	THICKNESS & WIDTH INCHES	WT. LBS. PER FT.	THICKNESS & WIDTH INCHES	WT. LBS. PER FT.
1/4 – INCH		5/16 – INCH CONT.		7/16 – INCH	
3/8	.319	2	2.125	3/4	1.116
1/2	.425	2 1/4	2.391	7/8	1.302
5/8	.531	2 1/2	2.656	1	1.488
3/4	.638	2 3/4	2.922	1 1/4	1.859
7/8	.744	3	3.188	1 1/2	2.231
1	.850	3 1/4	3.453	1 3/4	2.603
1 1/8	.956	3 1/2	3.719	2	2.975
1 1/4	1.063	4	4.250	2 1/4	3.347
1 3/8	1.169	4 1/2	4.781	2 1/2	3.719
1 1/2	1.275	5	5.313	3	4.463
1 5/8	1.381	5 1/2	5.840	3 1/2	5.206
1 3/4	1.488	6	6.375	4	5.950
2	1.700	7	7.440	4 1/2	6.694
2 1/4	1.913	7 1/2	7.970	5	7.438
2 1/2	2.125	8	8.500	6	8.925
2 3/4	2.338				
3	2.550	3/8 – INCH		1/2 – INCH	
3 1/4	2.763	1/2	.638	5/8	1.063
3 1/2	2.975	5/8	.797	3/4	1.275
3 3/4	3.188	3/4	.956	7/8	1.488
4	3.400	7/8	1.116	1	1.700
4 1/4	3.613	1	1.275	1 1/8	1.913
4 1/2	3.825	1 1/8	1.434	1 1/4	2.125
5	4.250	1 1/4	1.594	1 3/8	2.338
5 1/2	4.675	1 3/8	1.753	1 1/2	2.550
6	5.100	1 1/2	1.913	1 5/8	2.763
6 1/2	5.530	1 5/8	2.072	1 3/4	2.975
7	5.950	1 3/4	2.231	2	3.400
7 1/2	6.380	2	2.550	2 1/2	4.250
8	6.800	2 1/4	2.869	2 3/4	4.675
		2 1/2	3.188	3	5.100
		2 3/4	3.506	3 1/4	5.525
		3	3.825	3 1/2	5.950
		3 1/4	4.144	4	6.800
		3 1/2	4.463	4 1/2	7.650
		4	5.100	5	8.500
		4 1/2	5.738	5 1/2	9.350
		5	6.375	6	10.200
		5 1/2	7.013	7	11.900
		6	7.650	8	13.600
		7	8.930		
		8	10.200		
5/16 – INCH					
1/2	.531				
5/8	.664				
3/4	.797				
7/8	.930				
1	1.063				
1 1/8	1.195				
1 1/4	1.328				
1 3/8	1.461				
1 1/2	1.594				
1 3/4	1.859				

ALSO IN ALUMINUM,
STAINLESS STEEL AND BRASS



FLAT BARS

HOT OR COLD ROLLED STOCK LENGTHS 20FT.

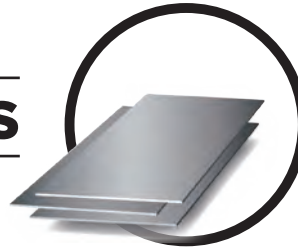


THICKNESS & WIDTH INCHES		WT. LBS. PER FT.	THICKNESS & WIDTH INCHES		WT. LBS. PER FT.	THICKNESS & WIDTH INCHES		WT. LBS. PER FT.
5/8 – INCH			3/4 – INCH CONT.			1 – INCH CONT.		
3/4	1.594		5	12.750		5 1/2	18.700	
7/8	1.859		5 1/2	14.020		6	20.400	
1	2.125		6	15.300		7	23.800	
1 1/8	2.391		7	17.850		8	27.200	
1 1/4	2.656		8	20.400		1 1/8 – INCH		
1 3/8	2.922		7/8 – INCH			2	7.650	
1 1/2	3.188		1	2.975		3	11.480	
1 5/8	3.453		1 1/4	3.719		4	15.300	
1 3/4	3.719		1 3/8	4.091		5	19.130	
2	4.250		1 1/2	4.463		6	22.950	
2 1/4	4.781		1 3/4	5.206		1 1/4 – INCH		
2 1/2	5.313		2	5.950		1 1/2	6.375	
2 3/4	5.844		2 1/4	6.694		1 3/4	7.438	
3	6.375		2 1/2	7.438		2	8.500	
3 1/4	6.906		2 3/4	8.181		2 1/4	9.563	
3 1/2	7.438		3	8.925		2 1/2	10.630	
4	8.500		3 1/2	10.410		2 3/4	11.690	
4 1/2	9.563		4	11.900		3	12.750	
5	10.630		4 1/2	13.390		3 1/4	13.810	
5 1/2	11.690		5	14.870		3 1/2	14.870	
6	12.750		5 1/2	16.360		4	17.000	
7	14.870		6	17.850		4 1/2	19.120	
8	17.000		7	20.830		5	21.250	
3/4 – INCH			8	23.800		5 1/2	23.370	
7/8	2.231		1 – INCH			6	25.500	
1	2.550		1 1/4	4.250		7	29.750	
1 1/8	2.869		1 1/2	5.100		8	34.00	
1 1/4	3.188		1 3/4	5.950		1 1/2 – INCH		
1 1/2	3.825		2	6.800		2	10.20	
1 5/8	4.144		2 1/4	7.650		2 1/4	11.48	
1 3/4	4.463		2 1/2	8.500		2 1/2	12.75	
2	5.100		2 3/4	9.350		2 3/4	14.03	
2 1/4	5.738		3	10.200		3	15.30	
2 1/2	6.375		3 1/4	11.050		3 1/2	17.85	
2 3/4	7.013		3 1/2	11.900				
3	7.650		4	13.600				
3 1/4	8.288		4 1/2	15.300				
3 1/2	8.925		5	17.000				
4	10.200							
4 1/4	11.470							

ALSO IN ALUMINUM,
STAINLESS STEEL AND BRASS

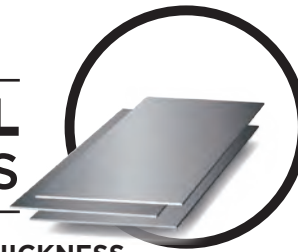


FLAT BARS



THICKNESS & WIDTH INCHES	WT. LBS. PER FT.	THICKNESS & WIDTH INCHES	WT. LBS. PER FT.	THICKNESS & WIDTH INCHES	WT. LBS. PER FT.
1½ - INCH CONT.		2 - INCH CONT.		3 - INCH CONT.	
4	20.40	2½	17.00	4	40.80
4½	22.95	3	20.40	4½	45.90
5	25.50	3½	23.80	5	51.00
5½	28.05	4	27.20	6	61.20
6	30.60	4½	30.60	8	81.60
7	35.70	5	34.00		
8	40.80	6	40.80		
		7	47.60		
		8	54.40		

FLAT - UNIVERSAL MILL PLATES

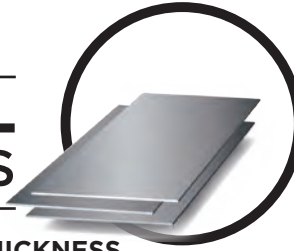


THICKNESS & WIDTH INCHES	WT. LBS. PER FT.	THICKNESS & WIDTH INCHES	WT. LBS. PER FT.
¼ x 9	7.65	½ x 9	15.30
10	8.50	10	17.00
11	9.35	12	20.40
12	10.20	14	23.80
13	11.05	16	27.20
14	11.90	18	30.60
15	12.75	20	34.00
16	13.60	22	37.40
18	15.30	24	40.80
20	17.00		
24	20.40	⅝ x 9	19.13
5/16 x 9	9.56	10	21.25
10	10.63	12	25.50
12	12.75	14	29.75
14	14.88	16	34.00
16	17.00	18	38.25
18	19.13	20	42.50
20	21.25	22	46.75
22	23.38	24	51.00
24	25.50		
¾ x 9	11.48	¾ x 9	22.95
10	12.75	10	25.50
11	14.03	12	30.60
12	15.30	14	35.70
13	16.58	16	40.80
14	17.85	18	45.90
16	20.40	20	51.00
18	22.95	22	56.10
20	25.50	24	61.20
22	28.05		
24	30.60	7/8 x 10	29.75
		12	35.70
		14	41.65
		16	47.60
		18	53.55
		20	59.50
		24	71.40

ALSO IN ALUMINUM CALL FOR PRICE & AVAILABILITY IN STAINLESS



FLAT - UNIVERSAL MILL PLATES



THICKNESS & WIDTH INCHES	WT. LBS. PER FT.	THICKNESS & WIDTH INCHES	WT. LBS. PER FT.
1 x 9	30.60	1½ x 10	51.00
10	34.00	12	61.20
12	40.80	14	71.40
14	47.60	16	81.60
16	54.40	18	91.80
18	61.20	20	102.0
20	68.00	24	122.4
24	74.80		
	81.60	2 x 9	61.20
1¼ x 9	38.25	10	68.00
10	42.50	12	81.60
12	51.00		
14	59.50		
16	68.00		
18	76.50		
20	85.00		
22	102.00		
24			

ROUND STEEL TUBING

Welded & Seamless (DOM)
Stock Lengths 20ft.



O.D. SIZE IN INCHES	WALL	I.D.	WT. LBS. PER FT.
3/8	.049	.277	.170
	.065	.370	.302
1/2	.065	.495	.388
	.065	.620	.475
5/8	.120	.510	.807
	.188	.375	1.128
3/4	.065	.745	.562
	.095	.870	.649
7/8	.120	.810	.918
	.188	.760	1.128
1"	.250	.625	1.630
	.065	.500	2.003
1¼	.188	.995	.735
	.065	.750	1.881
1⅝	.095	1.120	.822
	.120	1.060	1.172
1¾	.188	1.010	1.448
		.875	2.131

ALSO IN ALUMINUM CALL FOR PRICE
& AVAILABILITY IN STAINLESS



ROUND STEEL TUBING

Cont.



O.D. SIZE IN INCHES	WALL	I.D.	WT. LBS. PER FT.
1½	.065	1.370	.996
	.095	1.310	1.426
	.120	1.260	1.769
1⅝	.120	1.385	1.929
	.134	1.375	2.134
1¾	.065	1.620	1.170
	.095	1.560	1.679
	.120	1.510	2.089
2"	.065	1.870	1.343
	.095	1.810	1.933
	.120	1.760	2.409
2¼	.120	2.010	2.730
2½	.120	2.260	3.050
3"	.065	2.870	2.037
	.120	2.760	3.691
4"	.065	3.870	2.732

SQUARE TUBING

Stock Lengths 20ft.

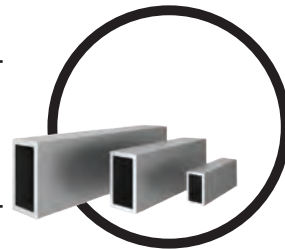


O.D. SIZE	WALL THICKNESS	LBS. / FT.
1/2 "	.065	.384
5/8 "	.065	.495
3/4 "	.065	.605
	.083	.752
1"	.065	.826
	.072	.905
	.083	1.04
	.109	1.32
	.120	1.44
1 ¼ "	.065	1.05
	.083	1.32
	.109	1.69
	.120	1.84
	.135	1.89
	.188	2.40

ALSO IN ALUMINUM CALL FOR PRICE
& AVAILABILITY IN STAINLESS



RECTANGULAR TUBING

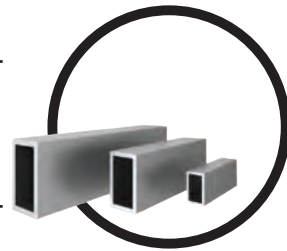


O.D. SIZE	WALL THICKNESS	LBS./FT.	O.D. SIZE	WALL THICKNESS	LBS./FT.
1 x 1/2	.065	.605	5 x 4	.188 .250	10.84 14.21
1 1/2 x 1/2	.065	.823	6 x 2	.120 .188 .250 .312 .375	6.53 9.59 12.51 15.33 18.02
1 1/2 x 3/4	.065 .120	.937 1.640	6 x 3	.120 .188 .250 .312 .375	6.955 10.84 14.21 17.44 20.57
1 1/2 x 1	.065 .120	1.05 1.84	6 x 4	.188 .250 .312 .375 .500	12.14 15.91 19.58 23.12 29.78
2 x 1	.065 .083 .120	1.18 1.60 2.25	7 x 5	.188 .250 .312 .375 .500	14.65 19.31 23.83 28.22 36.72
2 x 1 1/4	.120	2.46	8 x 2	.188 .250	12.14 15.91
2 x 1 1/2	.120	2.66	8 x 3	.188 .250 .375	13.39 17.61 25.67
2 1/2 x 1 1/2	.083 .120 .188 .250	2.16 3.12 4.49 5.59	8 x 4	.188 .250 .312 .375 .500	14.65 19.31 23.82 28.22 36.72
3 x 1	.083 .120	2.16 3.06	8 x 6	.188 .250 .312 .375 .500	17.13 22.71 28.08 33.32 43.51
3 x 1 1/2	.083 .120 .188	2.45 3.48 5.07	10 x 2	.188 .250	14.65 19.31
3 x 2	.083 .120 .188 .250 .312	2.73 3.98 5.75 7.41 8.85	10 x 4	.250 .375	22.71 33.32
4 x 2	.083 .120 .188 .250 .213	3.29 4.83 7.04 9.11 11.08	5 x 2	.120 .188 .250	5.68 8.30 10.81
4 x 3	.083 .120 .188 .250	3.86 5.68 8.30 10.81	5 x 3	.120 .188 .250 .312 .375	6.53 9.59 12.51 15.33 18.02

ALSO IN ALUMINUM CALL FOR PRICE
& AVAILABILITY IN STAINLESS



RECTANGULAR TUBING cont.



O.D. SIZE	WALL THICKNESS	LBS./FT.	O.D. SIZE	WALL THICKNESS	LBS./FT.
10 x 6	.188	19.65	12 x 2	.188	17.13
	.250	26.04		.250	22.71
	.375	38.42			
10 x 8	.250	29.37	12 x 4	.250	26.04
	.312	36.38	12 x 6	.250	29.37
				.312	36.38

ALSO IN ALUMINUM CALL FOR PRICE
& AVAILABILITY IN STAINLESS



PIPE

STEEL PIPE WALL THICKNESSES & WEIGHT



BLUE FACE TYPE: wall thickness in inches

BLACK FACE TYPE: Weight per foot in pounds

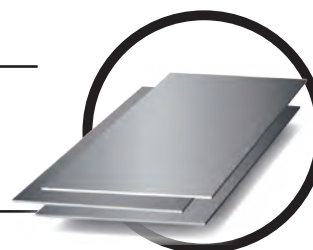
PIPE SIZE	O.D. (inches)	5	10s	10	20	30	40	STD.	60	80	XH	100	120	140	160	XXH
1/8	.405	.035 .1383	.049 .1863	.049 .1863			.068 .2447	.068 .2447		.095 .3145	.095 .3145					
1/4	.540	.049 .2570	.065 .3297	.065 .3297			.088 .4248	.088 .4248		.119 .5351	.119 .5351					
3/8	.675	.049 .3276	.065 .4235	.065 .4235			.091 .5675	.091 .5675		.126 .7388	.126 .7388					
1/2	.840	.065 .5383	.083 .6710	.083 .6710			.109 .8510	.109 .8510		.147 1.088	.147 1.088				.187 1.304	.294 1.714
3/4	1.050	.065 .6838	.083 .8572	.083 .8572			.113 1.131	.113 1.131		.154 1.474	.154 1.474				.218 1.937	.308 2.441
1	1.315	.065 .8678	.109 1.404	.109 1.404			.133 1.679	.133 1.679		.179 2.172	.179 2.172				.250 2.844	.358 3.659
1-1/4	1.660	.065 1.107	.109 1.806	.109 1.806			.140 2.273	.140 2.273		.191 2.997	.191 2.997				.250 3.765	.382 5.214
1-1/2	1.900	.065 1.274	.109 2.085	.109 2.085			.145 2.718	.145 2.718		.200 3.631	.200 3.631				.281 4.859	.400 6.408
2	2.375	.065 1.604	.109 2.638	.109 2.638			.154 3.653	.154 3.653		.218 5.022	.218 5.022				.343 7.444	.436 9.029
2-1/2	2.875	.083 2.475	.120 3.531	.120 3.531			.203 5.793	.203 5.793		.276 7.661	.276 7.661				.375 10.01	.552 13.70
3	3.500	.083 3.029	.120 4.332	.120 4.332			.216 7.576	.216 7.576		.300 10.25	.300 10.25				.437 14.32	.600 18.58
3-1/2	4.0	.083 3.472	.120 4.937	.120 4.937			.226 9.109	.226 9.109		.318 12.51	.318 12.51					.636 22.85
4	4.50	.083 3.915	.120 5.613	.120 5.613			.237 10.79	.237 10.79	.281 12.66	.337 14.98	.337 14.98		.437 19.01		.531 22.51	.674 27.54
5	5.563	.109 6.349	.134 7.770	.134 7.770			.258 14.62	.258 14.62		.375 20.78	.375 20.78		.500 27.04		.625 32.96	.750 38.55
6	6.625	.109 7.585	.134 9.289	.134 9.289			.280 18.97	.280 18.97		.432 28.57	.432 28.57		.562 36.39		.718 45.30	.864 53.16
8	8.625	.109 9.914	.148 13.40	.148 13.40	.250 22.36	.277 24.70	.322 28.55	.322 28.55	.406 35.64	.500 43.39	.500 43.39	.593 50.87	.718 60.63	.812 67.76	.906 74.69	.875 72.42
9	9.625							.342 33.90				.500 48.72				
10	10.75	.134 15.19	.165 18.65	.165 18.65	.250 28.04	.307 34.24	.365 40.48	.365 40.48	.500 54.74	.593 64.33	.500 54.74	.718 76.93	.843 89.20	1.000 104.0	1.125 115.7	
12	12.75	.165 22.18	.180 24.16	.180 24.20	.250 33.38	.330 43.77	.406 53.33	.375 49.56	.562 73.16	.688 88.51	.500 65.42	.843 107.2	1.000 125.5	1.125 139.7	1.312 160.3	
14	14.0		.188 27.73	.250 36.71	.312 45.68	.375 54.57	.438 63.37	.375 54.57	.593 84.91	.750 106.1	.500 72.09	.937 130.7	1.093 150.7	1.250 170.2	1.406 189.1	
16	16.0		.188 31.75	.250 42.05	.312 52.36	.375 62.58	.500 82.77	.375 62.58	.656 107.5	.844 136.5	.500 82.77	1.031 164.8	1.218 192.3	1.437 223.5	1.593 245.1	
18	18.0		.188 35.76	.250 47.39	.312 59.03	.437 82.06	.562 104.8	.375 70.59	.750 138.2	.937 170.8	.500 93.45	1.156 208.0	1.375 244.1	1.562 274.2	1.781 308.5	
20	20.0		.218 46.05	.250 52.73	.375 78.60	.500 140.1	.593 122.9	.375 78.60	.812 166.4	1.031 208.9	.500 104.1	1.280 256.1	1.500 296.4	1.750 341.1	1.968 379.0	
22	22.0			.250 58.07	.375 86.61	.500 114.8		.375 86.61	.875 197.4	1.125 250.8	.500 114.8	1.375 277.0	1.625 353.6	1.875 403.0	2.125 451.1	
24	24.0		.250 63.41	.250 63.41	.375 94.62	.562 140.8	.687 171.2	.375 94.62	.968 238.1	1.218 296.4	.500 125.5	1.531 367.4	1.812 429.4	2.062 483.1	2.343 541.9	
26	26.0			.312 85.60	.500 136.2			.375 102.6			.500 136.2					
28	28.0			.312 92.26	.500 146.8	.625 182.7		.375 110.6			.500 146.8					
30	30.0		.312 98.93	.312 98.93	.500 157.5	.625 196.1		.375 118.6			.500 157.5					
32	32.0			.312 105.6	.500 168.2	.625 209.4	.688 230.1	.375 126.7			.500 168.2					
34	34.0			.344 123.7	.500 178.9	.625 222.8	.688 244.8	.375 134.7			.500 178.9					
36	36.0			.312 118.9	.500 189.6	.625 236.1	.750 282.3	.375 142.7			.500 189.6					
42	42.0							.375 166.7			.500 221.6					
48	48.0							.375 190.7			.500 253.6					

ALSO IN ALUMINUM CALL FOR PRICE & AVAILABILITY IN STAINLESS



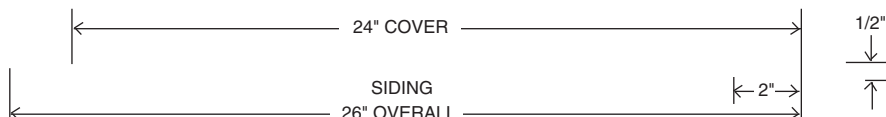
SHEETS

BLACK OR GALVANIZED



GAUGE & SIZE IN INCHES & LBS. PER SQ. FT.	WT. PER SHEET	GAUGE & SIZE IN INCHES & LBS. PER SQ. FT.	WT. PER SHEET
7 ga. (.1793") 7.5 lb.		11 ga. (.1196") 5.0 lb.	
48 x 96	240.00	48 x 96	160.00
48 x 120	300.00	48 x 120	200.00
8 ga. (.1644") 6.875 lb.		12 ga. (.1046") 4.375 lb.	
48 x 96	220.00	48 x 96	140.00
48 x 120	275.00	48 x 120	175.00
10 ga. (.1345") 5.625 lb.		14 ga. (.0747") 3.125 lb.	
48 x 96	180.00	48 x 96	100.00
48 x 120	225.00	48 x 120	125.00

CORRUGATED SHEETS



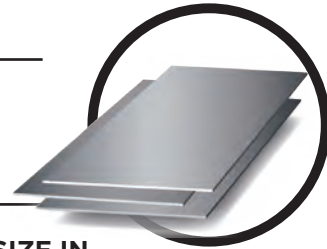
Materials						MAXIMUM RECOMMENDED SPANS		
Aluminum			Galvanized Steel			Simple Roof Span	Intermediate Roof Span	Walls 15 PSF
Thickness	S ³	#/Lineal Ft.	Thickness	S ³	#/Lineal Ft.			
Utility	.023	.58				2' - 4"	2' - 7"	2' - 10"
.019	.025	.63	Utility	.020	1.5	2' - 8"	2' - 10"	3' - 0"
.024	.032	.79	28 ga	.025	1.8	3' - 3"	3' - 7"	3' - 10"
			26 ga	.029	2.1	3' - 9"	4' - 2"	4' - 10"
			24 ga	.037	2.7	4' - 6"	5' - 0"	5' - 6"

ALSO IN ALUMINUM CALL FOR PRICE & AVAILABILITY IN STAINLESS



SHEETS

BLACK OR GALVANIZED

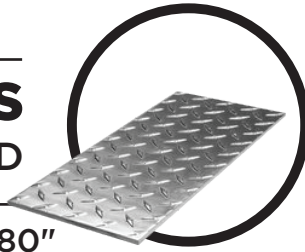


GAUGE & SIZE IN INCHES & LBS. PER SQ. FT.	WT. PER SHEET	GAUGE & SIZE IN INCHES & LBS. PER SQ. FT.	WT. PER SHEET
16 ga. (.0598") 2.5 lb.		22 ga. (.0299") 1.25 lb.	
48 x 96	80.00	48 x 96	160.00
48 x 120	100.00	48 x 120	200.00
18 ga. (.0478") 2.0 lb.		24 ga. (.0239") 1.0 lb.	
48 x 96	64.00	48 x 96	140.00
48 x 120	80.00	48 x 120	175.00
20 ga. (.0359") 1.5 lb.		26 ga. (.0179") .750 lb.	
48 x 96	48.00	36 x 96	18.00
48 x 120	60.00	36 x 120	22.50
		48 x 96	24.00
		48 x 120	30.00
		28 ga. (.0149") .625 lb.	
		48 x 96	24.99
		48 x 120	31.24

ALSO IN ALUMINUM CALL FOR PRICE
& AVAILABILITY IN STAINLESS



FLOOR PLATES DIAMOND TREAD



Stock Size Width 48" - 96", Length 96" - 480"

**WT. PER
SQ. FOOT**

**WT. PER
SQ. FOOT**

16 ga. .0208	3.00	1/4 .0782	11.26
14 ga. .0260	3.75	5/16 .0959	13.81
12 ga. .0365	5.25	3/8 .1137	16.37
1/8 .0427	6.15	1/2 .1491	21.47
3/16 .0605	8.71	3/4 .2200	31.68

**ALUMINUM
DIAMOND TREAD
PLATE STOCKED
IN ALL SIZES**

ALSO STOCKED IN
ALUMINUMS



26

SMOOTH PLATES

WEIGHTS AND MOST COMMON SIZES

STOCK SIZE Width 48" - 96", Length 96" - 480"



WT. PER SQ. FOOT

3/16	7.66		1	40.84
1/4	10.21		1 1/8	45.94
5/16	12.76		1 1/4	51.05
3/8	15.31		1 3/8	56.16
			1 1/2	61.26
1/2	20.42		1 5/8	66.36
			1 3/4	71.47
5/8	25.52		1 7/8	76.57
			2	81.68
3/4	30.63		2 1/8	88.70
7/8	35.73		2 1/4	91.80
			2 1/2	102.00
			2 3/4	112.20
			3	122.40
			3 1/4	132.60
			3 1/2	142.80
			3 3/4	153.00
			4	163.20

**AVAILABLE IN ALUMINUM,
STAINLESS STEEL AND ALLOY PLATE**

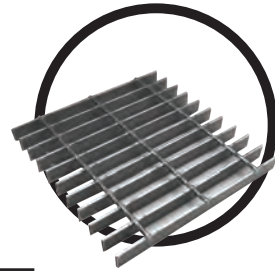
CALL FOR PRICE AND AVAILABILITY IN
STAINLESS STEEL AND ALUMINUM



27

RAISED EXPANDED METAL

CARBON STEEL

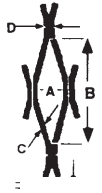
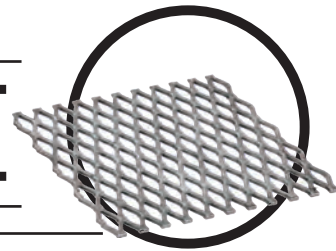


SIZE IN. AND STYLE NO.	WIDTH AND LENGTH INCHES	EST. LBS. SQ. FT.	OPENING SIZE INCHES A x B	STRAND INCHES C x D
1/4-No. 20	48 x 96	.86	.167 x .747	.036 x .073
1/4-No. 18	48 x 96	1.14	.155 x .703	.048 x .073
1/2-No. 20	48 x 96	.43	.440 x .968	.036 x .066
1/2-No. 18	48 x 96 72 x 96	.70	.393 x .920	.048 x .081
1/2-No. 16	48 x 96 48 x 120 72 x 96	.84	.375 x .906	.060 x .078
1/2-No. 13	48 x 96 72 x 96	.147	.355 x .826	.090 x .091
3/40No. 16	48 x 96 48 x 120 72 x 96	.50	.844 x 1.692	.060 x .092
3/4-No. 13	48 x 96 48 x 120 72 x 96 72 x 120	.80	.812 x 1.635	.090 x .098
3/4-No. 10	48 x 96 72 x 96	1.20	.786 x 1.592	.090 x 1.48
3/4-No. 9	48 x 96 48 x 120 60 x 120 72 x 96 72 x 120	1.80	.740 x 1.514	.134 x .148
1-No. 16	48 x 96 48 x 120	.44	.924 x 1.948	.060 x .189
1½-No. 16	48 x 96 48 x 120	.40	1.253 x 2.608	.060 x .107
1½-No. 13	48 x 96 48 x 120 72 x 96 72 x 120	.60	1.233 x 2.548	.090 x .107
1½-No. 10	96 x 120 48 x 96 48 x 120 72 x 96 72 x 120	.60	1.210 x 2.530	.090 x .140
1½-No. 9	48 x 96 48 x 120 72 x 96 72 x 120	1.20	1.165 x 2.446	.134 x .143
1½-No. 6	48 x 96 72 x 96 72 x 144	2.50	1.060 x 2.250	.198 x .203
2-No. 9	48 x 96	.90	1.562 x 3.375	.134 x .144

CALL FOR PRICE AND AVAILABILITY IN
STAINLESS STEEL AND ALUMINUM



FLAT EXPANDED METAL



SIZE IN. AND STYLE NO.	WIDTH AND LENGTH INCHES	EST. LBS. SQ. FT.	OPENING SIZE INCHES A x B	STRAND INCHES C x D
1/4-No.20	48 x 96	.82	.094 x .688	.029 x .086
1/4-No.18	48 x 96	1.08	.094 x .688	.042 x .080
1/2-No.20	36 x 96 48 x 96	.40	.261 x 1.00	.039 x .074
1/2-No.18	36 x 96 48 x 96 48 x 120	.66	.261 x 1.00	.039 x .095
1/2-No.16	36 x 96 36 x 120 48 x 96 48 x 120	.80	.250 x 1.00	.050 x .089
1/2-No.13	36 x 96 48 x 96 48 x 120	1.40	.250 x 1.00	.070 x .111
3/4-No.16	36 x 96 36 x 120 48 x 96 48 x 120	.47	.750 x 1.781	.048 x .110
3/4-No.14	36 x 96 36 x 120 48 x 96 48 x 120	.63	.688 x 1.781	.061 x .114
3/4-No.13	36 x 96 48 x 96 48 x 120	.76	.688 x 1.781	.070 x .137
3/4-No.9	36 x 96 36 x 120 48 x 96 48 x 120 60 x 120	1.71	.562 x 1.688	.120 x .157
1-No.16	48 x 96	.41	.780 x 2.060	.048 x .106
1½-No.16 Lt	48 x 96	.29	1.150 x 3.20	.048 x .090
1½-No.16	48 x 96	.38	1.062 x 2.75	.048 x .127
Hvy	36 x 96	.57	1.062 x 2.75	.048 x .130
1½-No.13	48 x 96 48 x 120			
1½-No.9	36 x 96 36 x 120 48 x 96 48 x 120	1.14	1.000 x 2.562	.110 x .165

CALL FOR PRICE AND AVAILABILITY IN
STAINLESS STEEL AND ALUMINUM



GRATING

EXPANDED METAL GRATING

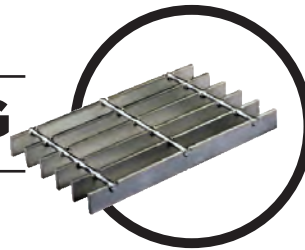
RAISED CARBON STEEL



EST. WT. LBS. PER SQ. FT.	STANDARD SHEET SIZE		DIAMOND OPENING SIZE INCHES A x B	STRAND SIZE THICKNESS BY WIDTH C x D
	WIDTH INCHES	LENGTH INCHES		
4.27	48, 72	96	1.036 x 2.969	.250 x .295
3.14	48, 72	96, 120	1.657 x 4.903	.250 x .308
3.0	48, 72	96	1.041 x 3.732	.179 x .267
	72	120, 144	1.041 x 3.732	.179 x .267
4.0	48, 60, 72	96, 120	.975 x 3.594	.215 x .297
5.0	48	96, 120	.950 x 3.400	.215 x .371
6.25	48, 72	96, 144	.915 x 3.460	.312 x .346

NOTE:All expanded metal dimensions and weights are approximate and subject to mill tolerance.

BAR GRATING



WELDED
Typical Dimensions
Inches

Types	A	B
Standard space pattern	4	1 ⁵ / ₁₆

BAR SIZE, IN.	BAR SIZE, IN.	BAR SIZE, IN.	BAR SIZE, IN.
1/8 x 3/4	3/16 x 1	1/8 x 1 1/2	3/16 x 2
3/16 x 3/4	1/8 x 1 1/4	3/16 x 1 1/2	3/16 x 2 1/4
1/8 x 1	3/16 x 1 1/4	3/16 x 1 3/4	

OTHER SIZES
AVAILABLE



30

FORMULAS

GEOMETRIC FORMULAS

CIRCLE

Area = Square of Diameter x .7854 or Square of Radius x 3.1416
Circumferences = diameter x 3.1416
Diameter = Circumference x .3183
Doubling diameter increases area four times; tripling diameter increases area nine times, etc.

SQUARE

Area = Square of Side
Diagonal = Side x 1.4142
Side = Diagonal x .7071
SQUARE AND CIRCLE WITH EQUAL AREA
Side of Square = Diameter of Circle x .7071 or Circumference of Circle x .2251
Diameter of Circle = Side of Square x 1.128
Circumference of Circle = Side of Square x 3.545

RECTANGLE

Area = Length x Width
Diagonal = Square root of sum of squares of Width and Length

TRIANGLE

Area = Base x 1/2 of Perpendicular Height

HEXAGON (Equal sides and angles)

Area = Square of Distance across Flats x .866 or Square of Side x 2.598
Side = 1/2 of Diagonal or Distance across Flats x .577
Diagonal = Distance across Flats x 1.155 or Side x 2

OCTAGON (Equal sides and angles)

Area = Square of Distance across Flats x .828 or Square of Side x 4.828
Side = Diagonal x .383 or Distance across Flats x .414
Diagonal = Distance across Flats x 1.082 or Side x 2.613

SPHERE

Area of Surface = Square of Diameter x 3.1416
Volume = Cube of Diameter x .5236

CUBE

Area of Surface = Square of Side x 6
Volume = Cube of Side
Diagonal = Side x 1.732

CYLINDER

Area of Curved Surface = Diameter x Length 3.1416
Volume = Square of Diameter x Length x .7854

CONE

Area of Curved Surface = Diameter of Base x Slant Height x 1.5708
Volume = Diameter of Based Squared x Perpendicular Height x .2618 or
Area of Base x 1/3 Perpendicular Height

PYRAMID

Lateral Surface Area (not incl. base) = Perimeter of Base x 1/2 Slant Height
Volume = Area of Base x 1/3 Perpendicular Height



**TONS
OF
METALS
FROM
A
SINGLE
PIECE
TO
A
TRUCK
LOAD**



www.tonnageindustrial.com

800.893.9681

2130 W. Cowles St.
Long Beach, CA 90813
sales@tonnageindustrial.com